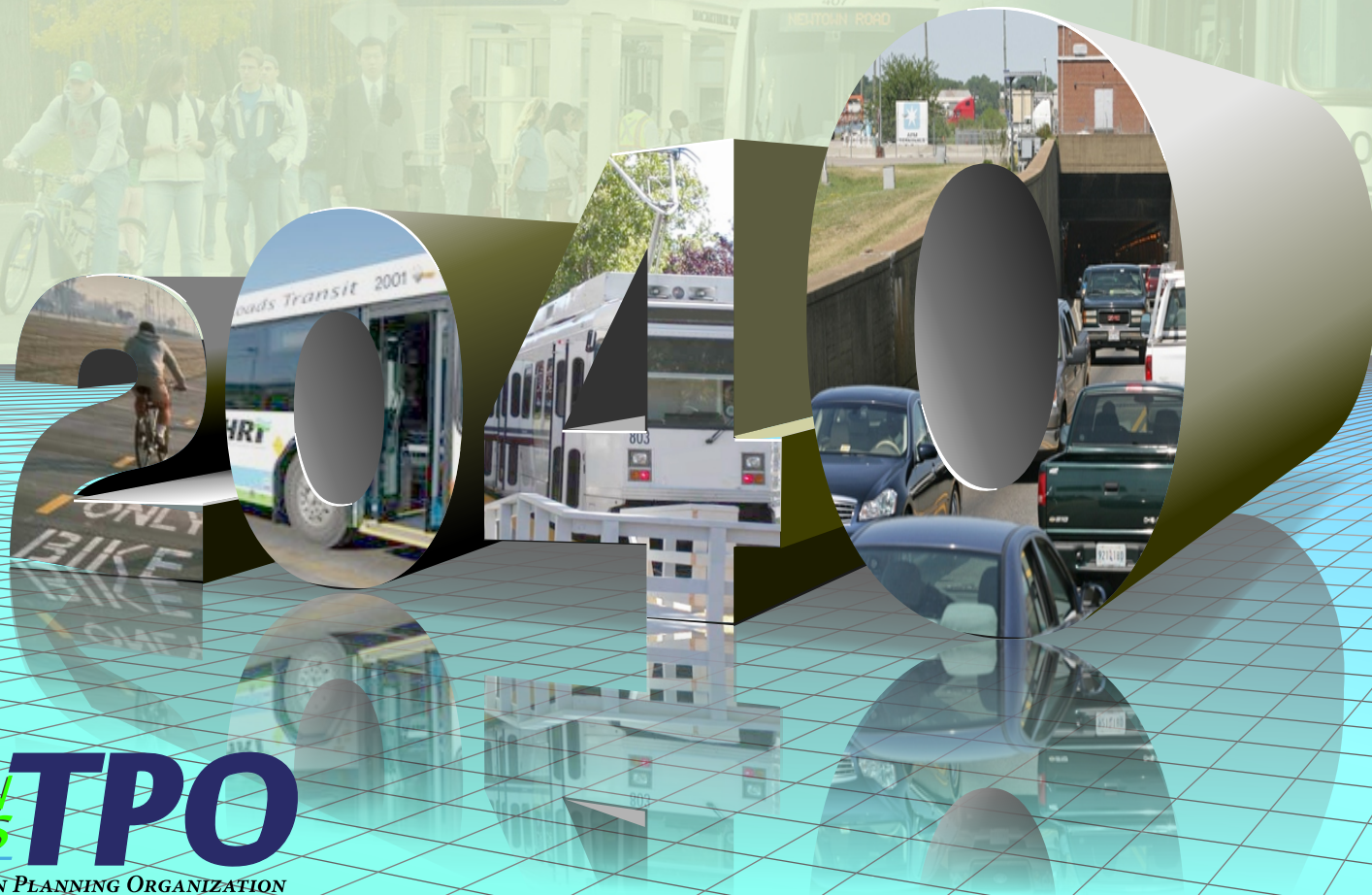


Hampton Roads 2040

Long-Range Transportation Plan:

Committed and Candidate Transportation Projects



HAMPTON ROADS TRANSPORTATION PLANNING ORGANIZATION

Camelia Ravanbakht
Interim Executive Director

VOTING MEMBERS:

CHESAPEAKE

Alan P. Krasnoff

GLOUCESTER COUNTY

John C. Meyer, Jr.

HAMPTON

George Wallace

ISLE OF WIGHT COUNTY

Delores Dee-Dee Darden

JAMES CITY COUNTY

Mary K. Jones

NEWPORT NEWS

McKinley Price

NORFOLK

Paul D. Fraim

POQUOSON

W. Eugene Hunt, Jr.

PORTSMOUTH

Kenneth I. Wright

SUFFOLK

Linda T. Johnson

VIRGINIA BEACH

William D. Sessoms, Jr.

WILLIAMSBURG

Clyde Haulman

YORK COUNTY

Thomas G. Shepperd, Jr.

MEMBERS OF THE VIRGINIA SENATE

The Honorable Thomas K. Norment, Jr.

The Honorable Frank W. Wagner

MEMBERS OF THE VIRGINIA HOUSE OF DELEGATES

The Honorable Christopher P. Stolle

The Honorable David Yancey

TRANSPORTATION DISTRICT COMMISSION OF HAMPTON ROADS

William E. Harrell, President/Chief Executive Officer

WILLIAMSBURG AREA TRANSIT AUTHORITY

Kevan Danker, Executive Director

VIRGINIA DEPARTMENT OF TRANSPORTATION

James Utterback, Hampton Roads District Administrator

VIRGINIA DEPARTMENT OF RAIL AND PUBLIC TRANSPORTATION

Jennifer Mitchell, Director

VIRGINIA PORT AUTHORITY

John Reinhart, CEO/Executive Director

HAMPTON ROADS TRANSPORTATION PLANNING ORGANIZATION

NON-VOTING MEMBERS:

CHESAPEAKE

James E. Baker

ISLE OF WIGHT COUNTY

Anne Seward

NORFOLK

Marcus Jones

SUFFOLK

Selena Cuffee-Glenn

WILLIAMSBURG

Jackson C. Tuttle

GLOUCESTER COUNTY

Brenda G. Garton

JAMES CITY COUNTY

Bryan J. Hill

POQUOSON

J. Randall Wheeler

VIRGINIA BEACH

James K. Spore

YORK COUNTY

James O. McReynolds

HAMPTON

Mary Bunting

NEWPORT NEWS

James M. Bourey

PORTSMOUTH

John Rowe

FEDERAL HIGHWAY ADMINISTRATION

Irene Rico, Division Administrator, Virginia Division

FEDERAL TRANSIT ADMINISTRATION

Reginald Lovelace, Acting Regional Administrator, Region 3

FEDERAL AVIATION ADMINISTRATION

Jeffrey W. Breeden, Airport Planner, Washington Airports Office District

VIRGINIA DEPARTMENT OF AVIATION

Randall P. Burdette, Director

PENINSULA AIRPORT COMMISSION

Ken Spirito, Executive Director

NORFOLK AIRPORT AUTHORITY

Wayne E. Shank, Executive Director

CITIZEN TRANSPORTATION ADVISORY COMMITTEE

Shepelle Watkins-White, Chair

FREIGHT TRANSPORTATION ADVISORY COMMITTEE

Arthur Moye, Jr., Co-Chair (Nonvoting Board Member)

Delegate Christopher P. Stolle, Co-Chair (Voting Board Member)

MILITARY LIAISONS

Robert Clark, Captain, U.S. Navy

Vacant, U.S. Coast Guard

John J. Allen, Jr., Colonel, Langley

William S. Galbraith, Colonel, Langley

INVITED PARTICIPANT

John Malbon, Commonwealth Transportation Board

HRTPO PROJECT STAFF

Robert B. Case, P.E., Ph.D.

Principal Transportation Engineer

Dale M. Stith, AICP, GISP

Senior Transportation Planner

Theresa K. Jones

Transportation Engineer

Kathlene Grauberger

Senior Administrative Assistant

Michael Long

General Services Manager

Christopher Vaigneur

Assistant General Services Manager

REPORT DOCUMENTATION

TITLE

Hampton Roads 2040 Long-Range Transportation Plan:
Committed and Candidate Transportation Projects

AUTHORS

Dale M. Stith, AICP, GISP
Theresa K. Jones

PROJECT MANAGER

Robert B. Case, Ph.D.

REPORT DATE

September 2014

ORGANIZATION CONTACT INFORMATION

Hampton Roads Transportation Planning Organization
723 Woodlake Drive
Chesapeake, Virginia 23320
757-420-8300
<http://www.hrtpo.org>

ABSTRACT

The Hampton Roads Transportation Planning Organization (HRTPO) is currently in the process of updating the regional Long-Range Transportation Plan to the horizon year 2040. As part of this process and in keeping with federal regulations, HRTPO staff must consider transportation alternatives to effectively address future regional needs based upon projected population and employment growth for the next 20 years. To accomplish this task, staff developed a list of approximately 200 candidate transportation projects to be considered for inclusion in the 2040 LRTP.

ACKNOWLEDGEMENTS

This document was prepared by the Hampton Roads Transportation Planning Organization (HRTPO) in cooperation with the U.S. Department of Transportation (USDOT), Federal Highway Administration (FHWA), Federal Transit Administration (FTA), Virginia Department of Transportation (VDOT), Virginia Department of Rail and Public Transportation (DRPT), Transportation District Commission of Hampton Roads (TDCHR), and Williamsburg Area Transit Authority (WATA). The contents of this report reflect the views of the HRTPO. The HRTPO staff is responsible for the facts and the accuracy of the data presented herein. The contents do not necessarily reflect the official views or policies of the FHWA, FTA, VDOT or DRPT. This report

does not constitute a standard, specification, or regulation. FHWA, FTA, VDOT or DRPT acceptance of this report as evidence of fulfillment of the objectives of this program does not constitute endorsement/approval of the need for any recommended improvements nor does it constitute approval of their location and design or a commitment to fund any such improvements. Additional project level environmental impact assessments and/or studies of alternatives may be necessary.

NON-DISCRIMINATION

The HRTPO assures that no person shall, on the ground of race, color, national origin, handicap, sex, age, or income status as provided by Title VI of the Civil Rights Act of 1964 and subsequent authorities, be excluded from participation in, be denied the benefits of, or be otherwise subject to discrimination under any program or activity. The HRTPO Title VI Plan provides this assurance, information about HRTPO responsibilities, and a Discrimination Complaint Form.

Hampton Roads 2040 Long-Range Transportation Plan: Committed and Candidate Transportation Projects



T14-10

TABLE OF CONTENTS

LRTP UPDATE OVERVIEW	1
COLLECTION OF CANDIDATE PROJECTS	2
IDENTIFICATION OF COMMITTED PROJECTS	3
NEXT STEPS	3
2040 LRTP COMMITTED PROJECTS	6
2040 LRTP CANDIDATE PROJECTS	10

LIST OF TABLES

TABLE 1: 2040 LRTP COMMITTED PROJECTS.....	7
TABLE 2: 2040 LRTP CANDIDATE PROJECTS	11

LIST OF FIGURES

FIGURE 1: HRTPO PROJECT PRIORITIZATION.....	4
FIGURE 2: 2040 LRTP DEVELOPMENT PLANNING MILESTONES	5

Hampton Roads 2040 Long-Range Transportation Plan: Committed and Candidate Transportation Projects

LRTP UPDATE OVERVIEW

Maintaining the current transportation system and preparing for future transportation needs involves considerable planning. To prepare, the Hampton Roads Transportation Planning Organization (HRTPO) develops a regional blueprint, or Long-Range Transportation Plan (LRTP) to maximize the use of scarce transportation resources in promoting system efficiency. The LRTP is updated on a regular basis in order to assess the current transportation system and reflect new planning priorities, population and employment projections, changes in the economy, and anticipated travel demand.

Over the last few years, HRTPO staff has been developing the next LRTP, *Navigating the Future to 2040*. To update the LRTP, HRTPO staff assessed the current transportation system to determine the condition of roadways, bridges, and tunnels, congestion issues, safety issues, etc. HRTPO staff also examined how the region may develop over the next twenty years based upon projected population and employment growth. Changes in growth can impact demand on the regional transportation system, therefore future plans must consider alternatives to effectively address these needs. Future population and employment estimates for each Hampton Roads locality for the year 2040 were also developed. These projections were refined to smaller geographic areas within each jurisdiction, known as Transportation Analysis Zones (TAZs) to show where this

anticipated growth will occur and how this growth may impact the transportation system.

Additionally, the HRTPO conducted a web-based public survey between October and December 2012 in an effort to gather public input regarding regional priorities and concerns to help define the vision and goals for the 2040 LRTP. Survey respondents were also asked to identify potential transportation projects needed around the region. The survey was distributed via email, social media, regional libraries, city and county websites, other planning agency websites, and through several community events across the region. A wide spectrum of local civic and community organizations participated in the survey, including senior and youth groups, emergency management organizations, transit agencies, bicycle and pedestrian advocacy groups, etc. Over the three months the survey was active, approximately 1,800 responses were collected from across the region. HRTPO staff utilized common themes from survey responses along with additional regional stakeholder input, comprehensive plans from localities, MAP-21 federal planning factors, and the state's *VTrans* 2035 guidelines to help establish the regional vision and goals to help guide the development of the 2040 LRTP.

Candidate project suggestions were collected from various stakeholders across the region, including interested citizens. These candidate projects will be evaluated in terms of project utility, economic vitality, and project viability. Once the best

projects are determined from the list of candidate projects, funds will be identified to pay for the projects, which can include new or widened roadways as well as new or expanded transit services. The entire LRTP Update process takes approximately four years to complete and requires regional cooperation and public participation.

COLLECTION OF CANDIDATE PROJECTS

In order to determine the best alternatives to effectively address future regional needs, a draft list of approximately 200 candidate projects was developed for consideration in the 2040 LRTP. These candidate projects include highway, transit, rail, ferry, and active transportation (bicycle and pedestrian) projects. The list was developed using the current 2034 LRTP projects, public input received via the 2040 LRTP Visioning Survey, and locality and regional stakeholder input received from the LRTP Subcommittee (comprised of representatives from localities, transit agencies, state and federal transportation agencies, etc.).

In early 2014, the Candidate Projects list was distributed throughout Hampton Roads for review and comment to the following groups:

HRTPO Advisory Committees

Regional Civic Organizations

Regional Libraries, City/County Administrative Offices, Community Centers

Respondents from the LRTP Visioning Survey

What is an LRTP?

The Long-Range Transportation Plan (LRTP) is the blueprint for the region's multimodal transportation system, identifying all regionally significant transportation projects planned for Hampton Roads over the next twenty years.

The development of the LRTP is based on a collaborative process involving many regional stakeholders, including elected officials, regional engineers and planners, representatives from the military, Port of Virginia, the business community, advocacy groups, and the public. These stakeholders work together to identify, prioritize, and fund needed regional transportation investments.

The Candidate Projects list was also distributed using the following tools:

HRTPO Environmental Justice and E-Newsletter Databases

HRTPO and Locality Websites

Social Media

Public meetings were also held in Poquoson and Chesapeake with HRTPO staff available to discuss the candidate projects as well as receive project suggestions.

In addition to the public meetings, a short survey on the Candidate Projects list was also hosted on the HRTPO website asking survey respondents:

- Do you think the candidate projects will provide congestion relief?
- Do you think the candidate projects will lead to greater connectivity?
- Are there any other major projects missing from the candidate projects list?

Of the nearly 400 survey participants, approximately 76% stated that the candidate projects would provide congestion relief and 79% agreed that the projects will lead to greater connectivity. Many additional candidate projects were suggested ranging from new highway projects to new bicycle and pedestrian facilities.

After extensive stakeholder review, at its June 19, 2014 meeting, the HRTPO Board endorsed the 2040 LRTP Candidate Projects list and directed HRTPO staff to begin the project

evaluation and prioritization process. Note that this list included both committed and un-committed projects.

IDENTIFICATION OF COMMITTED PROJECTS

In order to prepare for project evaluation and prioritization, committed projects were identified. Committed Projects are defined as fully funded transportation projects programmed in the current Six-Year Improvement Program (SYIP). Committed projects are either under construction or scheduled for construction in the near future. Committed Projects are not subject to Project Prioritization and are automatically included in the LRTP.

NEXT STEPS

The next step in the development of the 2040 LRTP will be to evaluate and prioritize the candidate transportation projects using the HRTPO Project Prioritization Tool. This process requires substantial data and stakeholder input, resulting in a prioritized list of candidate projects. After applying fiscal constraint (selecting projects within the 20-year financial budget), the final 2040 LRTP list of projects will help to achieve the overall goal of the 2040 LRTP: a well-balanced transportation system that remains accessible to all and promotes good quality of life while enhancing the unique character of Hampton Roads.

HRTPO PROJECT PRIORITIZATION

The HRTPO developed a project prioritization tool to establish an objective methodology to assist the HRTPO Board in selecting transportation projects that will benefit the region while maximizing the use of scarce financial resources. The HRTPO Project Prioritization Tool is designed to score candidate transportation projects based on their technical merits and regional benefits.

The Tool evaluates transportation projects based on three components: Project Utility (ability to solve an existing transportation issue), Project Viability (project readiness), and Economic Vitality (ability to support economic growth). Each component is worth 100 points, combining for a maximum score of 300 points.

Projects are evaluated in separate categories (highways, bridge/tunnel, transit, intermodal, bicycle and pedestrian, systems management). Evaluation criteria are based on the current regional vision and can be modified to address changing regional priorities.

FIGURE 1: HRTPO PROJECT PRIORITIZATION

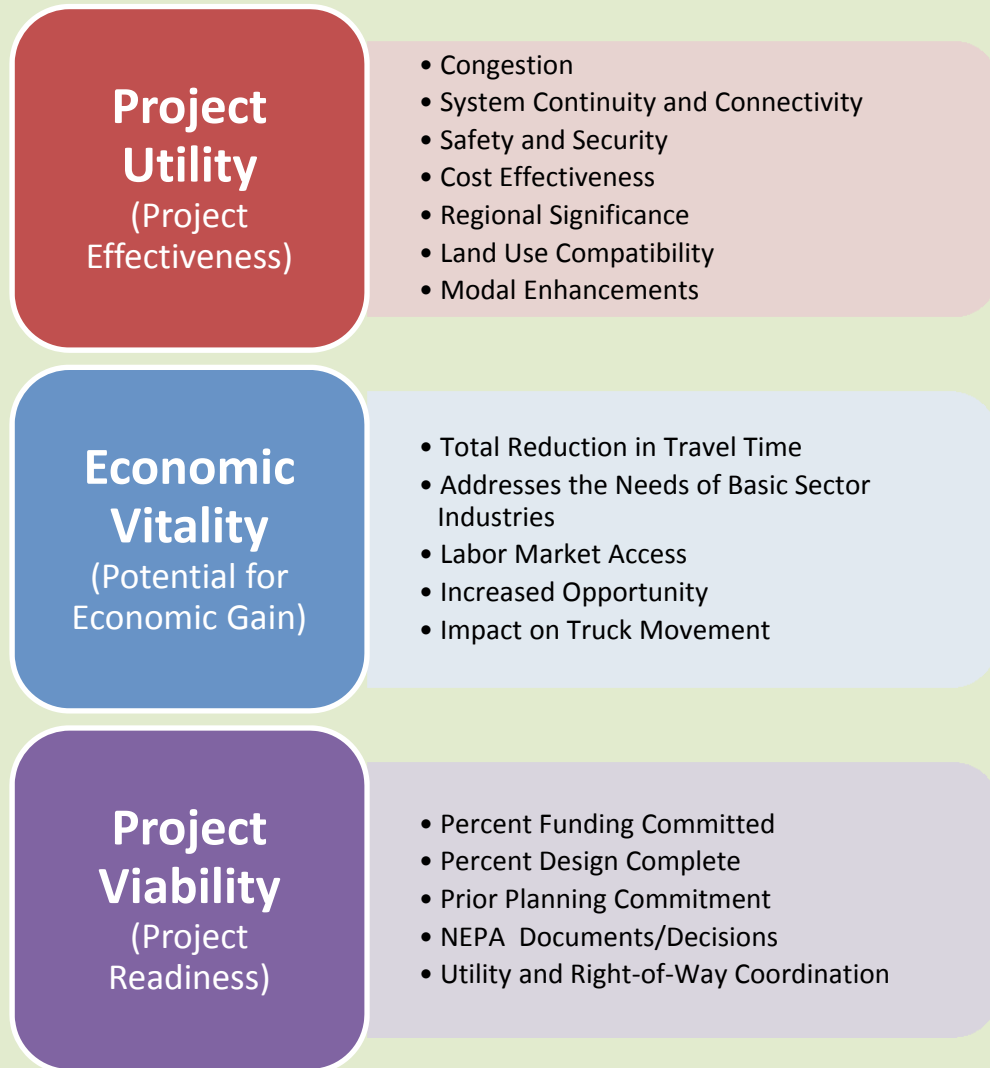
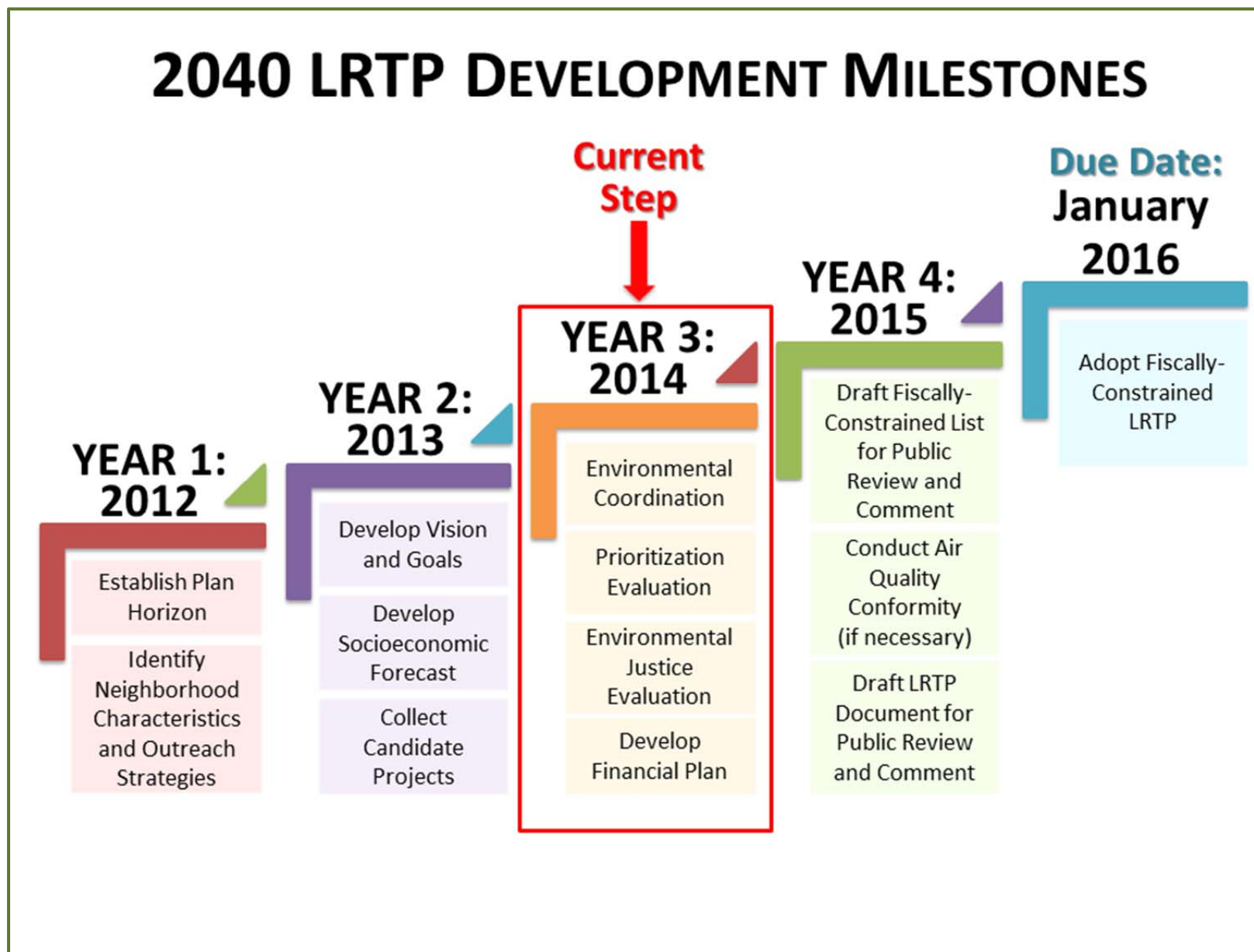


FIGURE 2: 2040 LRTP DEVELOPMENT PLANNING MILESTONES



2040 LRTP COMMITTED PROJECTS

Table 1: 2040 LRTP Committed Projects List

2040 Project ID	UPC	Locality	Name	From	To
Hampton Roads Transportation Fund (HRTF) Projects*					
2040-1	104905	Multi-jurisdictional	I-64 Peninsula Widening- Segment 1	Jefferson Ave (Exit 255)	0.5 miles East of Exit 247
2040-2	N/A	Multi-jurisdictional	I-64 Peninsula Widening- Segment 2	0.5 miles East of Exit 247	Rt 199 East of Williamsburg (Exit 242)
2040-3	N/A	Multi-jurisdictional	I-64 & Fort Eustis Blvd Interchange	N/A	N/A
2040-4	N/A	Multi-jurisdictional	I-64 Peninsula Widening - Segment 3	Rt 199 East of Williamsburg (Exit 242)	Rt 199 West of Williamsburg (Exit 234)
2040-5	12834	Multi-jurisdictional	Patriots Crossing portion of Third Crossing** (including Craney Island Connector)	Hampton Blvd	I-664 and Western Fwy
2040-6	12834	Multi-jurisdictional	I-664 portion of Third Crossing**, (including Bowers Hill Interchange)	I-64/I-664 (Bowers Hill)	I-64/I-664 (Hampton Coliseum)
2040-7	N/A	Multi-jurisdictional	I-64 Southside Widening (including High Rise Bridge)	I-64/I-464	I-64/I-664 at Bowers Hill
2040-8	17630	Multi-jurisdictional	I-64/I-264 Interchange (including Witchduck Rd Interchange)	N/A	N/A
2040-9	N/A	Multi-jurisdictional	US 460/58/13 Connector (including SPSA Overpass and Hampton Roads Exec. Airport Interchanges)	I-664	Eastern end of Suffolk Bypass
Other Committed Projects					
2040-248	T11488	Multi-jurisdictional	Downtown Tunnel/Midtown Tunnel/MLK Extension	Hampton Blvd	I-264
2040-87	103803	Multi-jurisdictional	US 460 - Hampton Roads Portion	Suffolk Bypass	Zuni
2040-236	97715, 13427	Multi-jurisdictional	Wythe Creek Rd	Alphus St	Commander Shepard Blvd
2040-230	56187	Chesapeake	Dominion Blvd	0.05 mi N. of Great Bridge Blvd	0.75 mil S. of Cedar Rd
2040-231	1904	Chesapeake	Gilmerton Bridge	0.36 mi E. of Bridge (Bainbridge Blvd)	0.42 mi W. of Bridge (Shell Rd)
2040-232	18591	Chesapeake	Portsmouth Blvd	Jolliff Rd	Suffolk CL
2040-234	93081	Hampton	Bridge Street Bridge	Rudd Ln	Marrow St
2040-233	104363	Hampton	I-64 Interchange at Lasalle Ave	N/A	N/A
2040-235	57047	Hampton	Saunders Rd	Big Bethel Rd	Newport News CL

Table 1: 2040 LRTP Committed Projects List

2040 Project ID	UPC	Locality	Name	From	To
2040-90	4483	Newport News	Atkinson Blvd	Jefferson Ave	Warwick Blvd
2040-238	93077	Newport News	Denbigh Blvd Bridge Replacement	Richneck Rd	Trailblazer Blvd
2040-240	11816	Newport News	Middle Ground Blvd	Jefferson Ave	Warwick Blvd
2040-103	102734	Newport News	Newport News Multimodal High-Speed and Intercity Passenger Rail Station Development	N/A	N/A
2040-242	101279	Newport News	Warwick Blvd over Lake Maury	Gatewood Rd	J Clyde Morris Blvd
2040-241	85955	Newport News	Washington Ave Bridge Replacement	39th St	41st St
2040-244	14672	Norfolk	Hampton Blvd Railroad Grade Separation	Rogers Ave	B Ave
2040-243	18968	Norfolk	Intermodal Connector	I-564	Hampton Blvd
2040-247	9783	Norfolk	Military Hwy	0.3 mile S. of Northampton Blvd	Lowery Rd
2040-246	1765	Norfolk	Military Hwy	0.3 mi N. of Northampton Blvd	0.3 S. of Northampton Blvd
2040-245	84243	Norfolk	Military Hwy	Robin Hood Rd	0.3 mile N. of Northampton Blvd
2040-128	102715	Portsmouth	Churchland Bridge	N/A	N/A
2040-250	65655	Portsmouth	Turnpike Rd	0.13 mi E. of Frederick Blvd	Constitution Ave
2040-252	61407	Suffolk	Nansemond Pkwy	Chesapeake CL	NS Railroad
2040-139	100937	Suffolk	Route 58 (Holland Rd)	Suffolk Bypass	0.7 mi W. of Manning Bridge Rd
2040-151	103005	Virginia Beach	Centerville Turnpike	Indian River Rd	Kempsville Rd
2040-255	15827	Virginia Beach	Holland Road	Nimmo Pkwy	Dam Neck Rd
2040-256	51866	Virginia Beach	Kempsville Rd Intersection at Princess Anne Rd	N/A	N/A
2040-253	97737	Virginia Beach	Lesner Bridge	E. Stratford Rd	Paige Ave
2040-174	14603	Virginia Beach	Lynnhaven Pkwy	Indian River Rd	Centerville Tnpk

Table 1: 2040 LRTP Committed Projects List

2040 Project ID	UPC	Locality	Name	From	To
2040-258	52058	Virginia Beach	Nimmo Pkwy	Holland Rd	General Booth Blvd
2040-259	13482/93522/ 95555/96137	Virginia Beach	Princess Anne Rd and Nimmo Pkwy	Dam Neck Rd	Holland Rd
2040-260	60843	York County	Route 17 (George Washington Memorial Hwy)	Hampton Hwy	Dare Rd

Note: List not in ranked order

*Per HRTPO Resolution 2013-09, October 17, 2013

**Per the October 1997 FEIS, the Third Crossing Alternative 9 includes multimodal lanes along Patriots Crossing and along the northern portion of I-664 from Patriots Crossing to I-64 (Hampton Coliseum).

2040 LRTP CANDIDATE PROJECTS



Table 2: 2040 LRTP Candidate Projects List

2040 Project ID	UPC	Locality	Name	From	To	Improvement Type
2040-65A	N/A	Multi-jurisdictional	Bike Lanes on Greensprings Rd and Centerville Rd that connect to Capital Trail	Jamestown Rd (Rte 31)	John Tyler Hwy (Rte 5)	Bicycle / Pedestrian Facility
2040-65B	N/A	Multi-jurisdictional	Bike Lanes on Greensprings Rd and Centerville Rd that connect to Capital Trail	Richmond Rd (US 60)	Monticello Ave	Bicycle / Pedestrian Facility
2040-67	N/A	Multi-jurisdictional	Bike Path Along Shore Dr/Hampton Blvd/Little Creek Rd	Virginia Beach	Norfolk	Bicycle / Pedestrian Facility
2040-69	N/A	Multi-jurisdictional	Bike Trails/Lanes Along Light Rail Tracks	Norfolk	Oceanfront	Bicycle / Pedestrian Facility
2040-93	N/A	Multi-jurisdictional	Denbigh Blvd (Rte 173)	Independence Blvd	York CL	Widening
2040-195	N/A	Multi-jurisdictional	Denbigh Blvd (Rte 173)	Newport News CL	G.W. Mem Hwy (US 17)	Widening
2040-71	N/A	Multi-jurisdictional	Elizabeth River Ferry Expansion	Current Service Locations	ODU and Naval Station Norfolk	Ferry Service
2040-72	N/A	Multi-jurisdictional	Ferry Service	Norfolk	Hampton	Ferry Service
2040-73	N/A	Multi-jurisdictional	Ferry Service	Old Towne (Portsmouth)	Downtown Norfolk - Naval Station Norfolk	Ferry Service
2040-74A	N/A	Multi-jurisdictional	Hampton Roads Bridge Tunnel (8-Lanes)	I-64/I-664 (at Coliseum)	I-64/I-564	Widening
2040-76	102728	Multi-jurisdictional	High-Speed and Intercity Passenger Rail	Hampton Roads	Richmond / Northeast Corridor	Passenger Rail
2040-77	N/A	Multi-jurisdictional	I-64 Peninsula	I-664/I-64	I-95	Widening
2040-78	N/A	Multi-jurisdictional	Mooretown Rd Extension	Lightfoot Rd	Croaker Rd	New Alignment
2040-79	N/A	Multi-jurisdictional	Peninsula Commuter Rail	Newport News	Williamsburg	Passenger Rail
2040-80	N/A	Multi-jurisdictional	Peninsula Fixed Guideway (A1 Alignment)	Newport News City Hall	Denbigh Blvd (Rte 173)	Transit Facility
2040-80A	N/A	Multi-jurisdictional	Peninsula Fixed Guideway (A3 Alignment)	Christopher Newport University	Huntington Pointe	Transit Facility
2040-81	N/A	Multi-jurisdictional	Portsmouth-Southside Light Rail	Portsmouth	Southside	LRT Extension
2040-85	N/A	Multi-jurisdictional	South Hampton Roads Trail	Suffolk	Virginia Beach	Bicycle / Pedestrian Facility

Table 2: 2040 LRTP Candidate Projects List

2040 Project ID	UPC	Locality	Name	From	To	Improvement Type
2040-86	16556	Multi-jurisdictional	Southeastern Pkwy and Greenbelt	I-264	I-64/I-464	New Alignment
2040-83	N/A	Multi-jurisdictional	US 58	Bowers Hill	Suffolk Bypass	Widening
2040-88	N/A	Multi-jurisdictional	VA/NC Dismal Swamp Bike/Walk Trail Connection	VA	NC	Bicycle / Pedestrian Facility
2040-122	N/A	Multi-jurisdictional	Victory Blvd (Rte 171)	Wythe Creek Rd (Rte 172)	York County CL	Widening
2040-203	N/A	Multi-jurisdictional	Victory Blvd (Rte 171)	Poquoson CL	Hampton Hwy (Rte 134)	Widening
2040-82	13496	Multi-jurisdictional	US 60 Relocation	Fort Eustis Blvd	Green Mount Pkwy	New Alignment
2040-82A	14598	Multi-jurisdictional	US 60 Relocation	Fort Eustis Blvd	Merrimac Trail (Rte 143)	New Alignment
2040-10	N/A	Chesapeake	22nd St Bridge	Liberty St	Wilson Rd	Bridge Replacement
2040-11	N/A	Chesapeake	Ballahack Rd	G.W. Hwy (US 17)	Old Battlefield Blvd	Road Improvements
2040-16	N/A	Chesapeake	Centerville Tnpk	Mount Pleasant Rd	Virginia Beach CL	Widening and Bridge Replacement
2040-17	N/A	Chesapeake	Chesapeake Regional Airport Access Rd	West Rd	G.W. Hwy (US 17)	New Alignment
2040-18	N/A	Chesapeake	Multi-use Path Along Etheridge Manor Blvd/Hanbury Rd	Centerville Tnpk	Johnstown Rd	Bicycle / Pedestrian Facility
2040-19	N/A	Chesapeake	Multi-use Path Along G.W. Hwy (US 17)	Old Mill Rd	Deep Creek Park	Bicycle / Pedestrian Facility
2040-21	N/A	Chesapeake	Multi-use Path/Trail Along Dismal Swamp Canal	Existing Trailhead	North Carolina Border	Bicycle / Pedestrian Facility
2040-27	N/A	Chesapeake	Deep Crk AIW Bridge Replacement and G.W. Hwy (US 17)/Moses Granby Trail Intersection Improvements	Mill Creek Pkwy	Diamond Ave	Bridge Replacement and Intersection Improvements
2040-23	N/A	Chesapeake	Dominion Blvd	0.75 mi South of Cedar Rd	Existing 4-lane Segment South of Cedar Rd	Widening
2040-24	N/A	Chesapeake	Elbow Rd	Butts Station Rd	Virginia Beach CL	Widening
2040-25	N/A	Chesapeake	Freeman Ave	N/A	N/A	Railroad Overpass

Table 2: 2040 LRTP Candidate Projects List

2040 Project ID	UPC	Locality	Name	From	To	Improvement Type
2040-26	N/A	Chesapeake	G.W. Hwy (US 17)	Yadkin Rd	Canal Dr	Widening
2040-29	N/A	Chesapeake	Great Bridge Blvd	Battlefield Blvd	Chesapeake Expressway Off Ramp	Widening
2040-28	N/A	Chesapeake	Hanbury Rd	Johnstown Rd	Battlefield Blvd	Widening
2040-30	N/A	Chesapeake	Light Rail Transit Extension to Greenbrier Area	South Norfolk	Greenbrier Area	Transit Facility
2040-36	N/A	Chesapeake	Military Hwy	Allison Dr	Virginia Beach CL	Widening
2040-31	84359	Chesapeake	Mt Pleasant Rd, Phase 1	Chesapeake Expressway	Etheridge Rd	Widening
2040-32	N/A	Chesapeake	Mt Pleasant Rd, Phase 2	Etheridge Rd	Centerville Tnpk	Widening
2040-33	N/A	Chesapeake	Mt Pleasant Rd/Great Bridge Bypass	N/A	N/A	Interchange Improvements
2040-34	N/A	Chesapeake	Portlock Rd	N/A	N/A	Railroad Overpass
2040-37	N/A	Chesapeake	South Hampton Roads Trail: Western Branch	Taylor Rd	Poplar Hill Rd	Bicycle / Pedestrian Facility
2040-38	N/A	Chesapeake	Triple Decker Bridge (Interchange of US 13, US 460, and Norfolk Southern Rail Line)	N/A	N/A	Bridge Replacement
2040-39	N/A	Chesapeake	Woodlake Dr	Battlefield Blvd	Existing Woodlake Dr	New Alignment
2040-40	N/A	Gloucester	G.W. Mem Hwy (US 17)	1 mi North of Coleman Bridge	Main St (@ Walmart)	Widening
2040-41	N/A	Gloucester	G.W. Mem Hwy (US 17)	Main St (@ Walmart)	Ark Rd	Widening
2040-44	N/A	Hampton	Coliseum Dr	Hampton Roads Center Pkwy	Butler Farm Rd	New Alignment
2040-45	N/A	Hampton	I-64 at Lasalle Ave	I-64 WB	Lasalle Ave	Interchange Improvements
2040-46	N/A	Hampton	I-64 at N. King St	N/A	N/A	New Interchange
2040-47	N/A	Hampton	I-64 at Settlers Landing Rd	N/A	N/A	Interchange Improvements

Table 2: 2040 LRTP Candidate Projects List

2040 Project ID	UPC	Locality	Name	From	To	Improvement Type
2040-48	N/A	Hampton	Little Back River Rd	N. King St	Harris Creek Rd	Widening
2040-49	N/A	Isle of Wight	US 258	US 460	Sunset Dr	Widening
2040-50	101871	James City County	Airport Access Rd	Marclay Rd at Rte 617	Airport	Realignment
2040-51	N/A	James City County	Bike Lane on Monticello Ave	News Rd	Centerville Rd	Bicycle / Pedestrian Facility
2040-204	102944	James City County	Centerville Rd at News Rd	0.27 mi North of News Road	0.19 mi South of News Rd	Intersection Improvements
2040-52	100920	James City County	Croaker Rd	Richmond Rd (US 60)	Rochambeau Rd	Widening
2040-57	T13957	James City County	Humelsine Pkwy (Rte 199) at Colonial Pkwy	N/A	N/A	Bridge Replacement
2040-206	102948	James City County	Humelsine Pkwy (Rte 199) at Brookwood Dr	N/A	N/A	Intersection Improvements
2040-58	T13949	James City County	Jamestown Rd (Rte 31) Over Powhatan Creek	N/A	N/A	Bridge Replacement
2040-53A	100921	James City County	Longhill Rd (Phase 1)	Humelsine Pkwy (Rte 199)	Olde Towne Rd	Widening
2040-53B	N/A	James City County	Longhill Rd (Phase 2)	Olde Towne Rd	Warhill Trail	Widening
2040-53C	N/A	James City County	Longhill Rd (Phase 3)	Warhill Trail	Centerville Rd	Widening
2040-205	82961	James City County	Monticello Ave at Ironbound Rd (Rte 615)	N/A	N/A	Intersection Improvements
2040-54	102980	James City County	Pocahontas Trail Reconstruction	James City County Fire Station #2 (8429 Pocahontas Trail)	James City County Elementary School (8901 Pocahontas Trail)	Bicycle / Pedestrian Facility
2040-56	102947	James City County	Richmond Rd (US 60) at Humelsine Pkwy (Rte 199) West Ramp	N/A	N/A	Intersection Improvements
2040-59	98823	James City County	Rte 601 Over Diascund Creek	0.87 mi to Int Rte. 603	0.87 mi to Rte. 603	Bridge Replacement
2040-60	N/A	James City County	Sidewalks Along Longhill Rd over Humelsine Pkwy (Rte 199)	DePue Dr	Lane Place Dr	Bicycle / Pedestrian Facility
2040-61	100200	James City County	Skiffes Creek Connector	Green Mount Pkwy	Merrimac Trail (Rte 143)	New Alignment

Table 2: 2040 LRTP Candidate Projects List

2040 Project ID	UPC	Locality	Name	From	To	Improvement Type
2040-62	T11932	James City County	WATA Administrative Operations Center	N/A	N/A	Transit Facility
2040-91	N/A	Newport News	Briarfield Rd	Jefferson Ave	Hampton CL	Widening
2040-92	N/A	Newport News	Chestnut Ave	I-664	Briarfield Rd	Widening
2040-239	105624	Newport News	Fort Eustis Blvd Bridge Replacement	I-64	Lee Hall Reservoir	Bridge Replacement
2040-94	N/A	Newport News	Harpersville Rd	Jefferson Ave	Warwick Blvd	Widening
2040-95	N/A	Newport News	Harpersville Rd	J. Clyde Morris Blvd	Saunders Rd	Widening
2040-96	N/A	Newport News	I-64 at Denbigh Blvd (Rte 173)	N/A	N/A	New Interchange
2040-97	N/A	Newport News	Independence Blvd	Denbigh Blvd (Rte 173)	Fort Eustis Blvd	New Alignment
2040-98	N/A	Newport News	J. Clyde Morris Blvd / G.W. Hwy (US 17)	I-64	York CL	Widening
2040-99	N/A	Newport News	J. Clyde Morris Blvd	Jefferson Ave	Warwick Blvd	Widening
2040-100	N/A	Newport News	Jefferson Ave	Green Grove Ln	Fort Eustis Blvd	Widening
2040-101	N/A	Newport News	Liberty Pkwy	Oyster Point Rd	Freedom Way	New Alignment
2040-102	N/A	Newport News	Lucas Creek Rd Extension	Denbigh Blvd (Rte 173)	Atkinson Blvd	Widening
2040-104	N/A	Newport News	Oyster Point Rd	Jefferson Ave	Warwick Blvd	Widening
2040-105	N/A	Newport News	Patrick Henry Dr	Bland Blvd	Turnberry Blvd	New Alignment
2040-106	N/A	Newport News	Saunders Rd	Harpersville Rd	Hampton CL	Widening
2040-107	N/A	Newport News	Turnberry Blvd	McManus Blvd	Denbigh Blvd (Rte 173)	New Alignment
2040-108	N/A	Newport News	Warwick Blvd	Nettles Dr	Fort Eustis Blvd	Widening

Table 2: 2040 LRTP Candidate Projects List

2040 Project ID	UPC	Locality	Name	From	To	Improvement Type
2040-109	59175	Norfolk	Air Terminal Interchange	N/A	N/A	New Interchange
2040-112	N/A	Norfolk	Brambleton Ave	Midtown Tunnel	I-264	Widening
2040-113	56430	Norfolk	Elizabeth River Trail Extension	Existing Trailhead	Naval Station Norfolk	Bicycle / Pedestrian Facility
2040-114	N/A	Norfolk	Hampton Blvd at Terminal Blvd	N/A	N/A	Grade Separation
2040-115	N/A	Norfolk	I-264 at Ballentine Blvd Diverging Diamond Interchange	N/A	N/A	Interchange Improvements
2040-116	N/A	Norfolk	I-64 at Northampton Blvd Interchange Improvement	N/A	N/A	Interchange Improvements
2040-117	N/A	Norfolk	Little Creek Rd	Tidewater Dr	Shore Dr	Widening
2040-118	N/A	Norfolk	Military Hwy at I-64 -- New EB On-Ramp	N/A	N/A	Interchange Improvements
2040-119	T9093	Norfolk	Naval Station Norfolk Transit Extension	Existing LRT	Naval Station Norfolk	LRT Extension
2040-207	N/A	Norfolk	Terminal Blvd at Diven St	N/A	N/A	Intersection Improvements
2040-120	N/A	Norfolk	Virginia Beach Blvd	Military Hwy	Newtown Rd	Widening
2040-121	N/A	Poquoson	Bike Path on Wythe Creek Rd (Rte 172)	Yorktown Rd	Pasture Rd	Bicycle / Pedestrian Facility
2040-261	N/A	Poquoson	Laydon Way at Poquoson Ave at Little Florida Rd	N/A	N/A	Intersection Improvements
2040-123	N/A	Portsmouth	Bike lanes on Churchland Blvd	Portsmouth Trail	High St	Bicycle / Pedestrian Facility
2040-125	N/A	Portsmouth	Elm Ave	Victory Blvd (Rte 239)	G.W. Hwy (US 17)	Widening
2040-126	N/A	Portsmouth	Elm Ave at Navy Gates 29 and 36	N/A	N/A	Intersection Improvements
2040-127	N/A	Portsmouth	Hampton Roads Transit Transfer Station	N/A	N/A	Transit Facility
2040-129	10123	Portsmouth	Paradise Creek Bridge (Rte 239)	N/A	N/A	Bridge Replacement

Table 2: 2040 LRTP Candidate Projects List

2040 Project ID	UPC	Locality	Name	From	To	Improvement Type
2040-130	N/A	Portsmouth	West Norfolk Rd	Western Fwy (Rte 164)	End of Rte 164	Widening
2040-212	N/A	Smithfield	Battery Park Rd	S. Church St	Nike Park Rd	Widening
2040-211	N/A	Smithfield	S. Church St	Battery Park Rd	Talbot Dr	Widening
2040-131	N/A	Suffolk	Bridge Rd (US 17)	Mills Godwin Bridge	Chesapeake CL	Widening
2040-137	N/A	Suffolk	Bridge Rd (US 17)	Mills Godwin Bridge	Isle of Wight CL	Widening
2040-142	N/A	Suffolk	Finney Ave Flyover	N/A	N/A	Railroad Overpass
2040-132	104359	Suffolk	Kenyon Rd Connector	Kenyon Court	Holland Rd (US 58)	New Alignment
2040-133	60560	Suffolk	Kings Hwy Bridge	Godwin Blvd (Rte 10)	Kings Hwy	Bridge Replacement
2040-134	N/A	Suffolk	Mills Godwin Bridge	Quail Hollow	Waterview Rd	Widening
2040-138	N/A	Suffolk	Nansemond Pkwy (Rte 337)	Shoulder's Hill Rd (Rte 626)	Wilroy Rd (Rte 642)	Widening
2040-135	N/A	Suffolk	North Suffolk Connector Rd	Nansemond Pkwy (Rte 337) (near Hargrove Landing)	I-664	New Alignment
2040-136	59771	Suffolk	Rail-to-Trail (Suffolk Seaboard Coastline Trail)	Pughsville Rd	Downtown Suffolk	Bicycle / Pedestrian Facility
2040-140	69050	Suffolk	Shoulders Hill Rd (Rte 626)	Nansemond Pkwy (Rte 337)	Bridge Rd (US 17)	Widening
2040-141	N/A	Suffolk	Suffolk Rail Station	N/A	N/A	Passenger Rail Station
2040-143	N/A	Suffolk	Wilroy Rd (Rte 642)	Nansemond Pkwy (Rte 337)	Constance Rd	Widening
2040-150	N/A	Virginia Beach	Birdneck Rd	I-264	Virginia Beach Blvd	Widening
2040-152	N/A	Virginia Beach	Centerville Tnpk - Phase III	Chesapeake CL	Kempsville Rd	Widening
2040-153	N/A	Virginia Beach	Cleveland St - Phase III	Witchduck Rd	Clearfield Ave	Widening

Table 2: 2040 LRTP Candidate Projects List

2040 Project ID	UPC	Locality	Name	From	To	Improvement Type
2040-154	N/A	Virginia Beach	Cleveland St - Phase IV	Aragona Blvd	Independence Blvd	Widening
2040-158	N/A	Virginia Beach	Dam Neck Rd	Drakesmile Rd	London Bridge Rd	Widening
2040-157	N/A	Virginia Beach	Dam Neck Rd - Phase I	Princess Anne Rd	Holland Rd	Widening
2040-156	N/A	Virginia Beach	Dam Neck Rd - Phase II	Holland Rd	Drakesmile Rd	Widening
2040-155	N/A	Virginia Beach	Drakesmile Rd Extended	Dam Neck Rd	Princess Anne Rd	New Alignment
2040-159	N/A	Virginia Beach	Drakesmile Rd Extended - Phase I	Dam Neck Rd	Holland Rd	New Alignment
2040-160	N/A	Virginia Beach	Drakesmile Rd Extended - Phase II	Holland Rd	Princess Anne Rd	New Alignment
2040-161	15828	Virginia Beach	Elbow Rd / Dam Neck Rd	Indian River Rd	Virginia Beach Amphitheater	Widening
2040-162	N/A	Virginia Beach	Ferrell Pkwy	Indian River Rd	Indian Lakes Blvd	Widening
2040-163	N/A	Virginia Beach	Ferrell Pkwy	Indian Lakes Blvd	Pleasant Valley Rd	Widening
2040-164	N/A	Virginia Beach	First Colonial Rd	Old Donation Pkwy	Virginia Beach Blvd	Widening
2040-208	N/A	Virginia Beach	First Colonial Rd at Virginia Beach Blvd	N/A	N/A	Intersection Improvements
2040-165	N/A	Virginia Beach	General Booth Blvd	Oceana Blvd	Dam Neck Rd	Widening
2040-166	N/A	Virginia Beach	Holland Rd	Rosemont Rd	Independence Blvd	Widening
2040-167	N/A	Virginia Beach	I-264 at Independence Blvd	N/A	N/A	Interchange Improvements
2040-168	N/A	Virginia Beach	I-264 at Rosemont Rd	N/A	N/A	Interchange Improvements
2040-170	N/A	Virginia Beach	Indian River Rd	Centerville Tnpk	Ferrell Pkwy	Widening
2040-169	15829	Virginia Beach	Indian River Rd - Phase VII	Lynnhaven Pkwy	Elbow Rd (including Elbow Rd to CL)	Widening

Table 2: 2040 LRTP Candidate Projects List

2040 Project ID	UPC	Locality	Name	From	To	Improvement Type
2040-171	12546	Virginia Beach	Laskin Rd (US 58) - Phase I	Republic Rd	Oriole Dr	Widening
2040-172	14601	Virginia Beach	Laskin Rd (US 58) - Phase II	Oriole Dr	Laskin Rd Roundabout	Widening
2040-225	N/A	Virginia Beach	Level Green Powerline Corridor	Reon Dr	Chesapeake CL at S. Military Hwy	Bicycle / Pedestrian Facility
2040-173	N/A	Virginia Beach	London Bridge Rd	Dam Neck Rd	Shipps Corner Rd	Widening
2040-175	N/A	Virginia Beach	Lynnhaven Pkwy	Holland Rd	Princess Anne Rd	Widening
2040-176	N/A	Virginia Beach	Newtown Rd	Baker Rd	Virginia Beach Blvd	Widening
2040-177	N/A	Virginia Beach	Nimmo Pkwy	Indian River Rd	West Neck Pkwy Extended	New Alignment
2040-215	N/A	Virginia Beach	Nimmo Pkwy VII	Artesia Way / Atwoodtown Rd	Sandbridge Rd	New Alignment
2040-187	N/A	Virginia Beach	Nimmo Trail	Nimmo Pkwy	Sandbridge Rd	Bicycle / Pedestrian Facility
2040-222	N/A	Virginia Beach	Northampton Blvd Right-of-Way	Bayside Dr	Greenwell Rd	Bicycle / Pedestrian Facility
2040-178	N/A	Virginia Beach	Princess Anne Rd - Phase VII	Upton Dr	General Booth Blvd	Widening
2040-179	N/A	Virginia Beach	Providence Rd	Kempsville Rd	Princess Anne Rd	Widening
2040-180	N/A	Virginia Beach	Rosemont Rd	Virginia Beach Blvd	Holland Rd	Widening
2040-262	N/A	Virginia Beach	Rosemont Rd V	Dam Neck Rd	Lynnhaven Pkwy	Widening
2040-209	N/A	Virginia Beach	Rosemont Rd at Holland Rd	N/A	N/A	Intersection Improvements
2040-219	N/A	Virginia Beach	Salem Rd Extended	Elbow Rd	Indian River Rd	Widening
2040-226	N/A	Virginia Beach	Scarborough Bridge	Magic Hollow Blvd	Old Clubhouse Rd	Bicycle / Pedestrian Facility
2040-181	N/A	Virginia Beach	Seaboard Rd	Princess Anne Rd	Nimmo Pkwy	New Alignment

Table 2: 2040 LRTP Candidate Projects List

2040 Project ID	UPC	Locality	Name	From	To	Improvement Type
2040-218	N/A	Virginia Beach	Seaboard Rd	Princess Anne Rd	Princess Anne Rd	Congestion Relief
2040-184	N/A	Virginia Beach	Shore Dr	Pleasure House Rd	Treasure Island Dr	Widening
2040-183	N/A	Virginia Beach	Shore Dr - Phase III	Eastern End of Lesner Bridge	Great Neck Rd	Safety Improvements
2040-182	N/A	Virginia Beach	Shore Dr - Phase IV	Marlin Bay Dr/Shady Oaks Dr	Western end of Lesner Bridge	Safety Improvements
2040-221	N/A	Virginia Beach	South Hill Bypass	Dam Neck Rd	General Booth Blvd	Bicycle / Pedestrian Facility
2040-223	N/A	Virginia Beach	Thalia Creek Greenway - Phase 1C	Bonney Rd	I-264	Bicycle / Pedestrian Facility
2040-224	N/A	Virginia Beach	Thalia Creek Greenway Phase - 1D	Constitution Dr	Virginia Beach Blvd	Bicycle / Pedestrian Facility
2040-185	N/A	Virginia Beach	Violet Bank Dr Bike Trail	Kittery Dr	Selwood Dr	Bicycle / Pedestrian Facility
2040-186	T9093	Virginia Beach	Virginia Beach Transit Extension	Newtown Rd Station	Virginia Beach Oceanfront	LRT Extension
2040-213	N/A	Virginia Beach	Virginia Beach Transit Extension North - Phase II	Town Center / Independence Blvd	Shore Dr	Fixed Guideway
2040-214	N/A	Virginia Beach	Virginia Beach Transit Extension South - Phase III	Town Center / Independence Blvd	Virginia Beach Municipal Center	Fixed Guideway
2040-188	N/A	Virginia Beach	Walkway at Virginia Beach Town Center Over I-264	Virginia Beach Blvd	Independence Blvd	Bicycle / Pedestrian Facility
2040-189	N/A	Virginia Beach	West Neck Pkwy Extended	Dam Neck Rd	North Landing Rd	New Alignment
2040-217	N/A	Virginia Beach	West Neck Pkwy Extended	North Landing Rd	Indian River Rd	New Alignment
2040-220	N/A	Virginia Beach	West Neck Rd	North Landing Rd	Indian River Rd	Widening
2040-210	N/A	Williamsburg	Bypass Rd at Page St at Capitol Landing Rd	N/A	N/A	Intersection Improvements
2040-190	89062	Williamsburg	Ironbound Rd (Rte 615)	Richmond Rd (US 60)	DePue Dr (formerly Longhill Connector)	Widening
2040-191	N/A	Williamsburg	Monticello Ave	Richmond Rd (US 60)	Treyburn Dr	Widening

Table 2: 2040 LRTP Candidate Projects List

2040 Project ID	UPC	Locality	Name	From	To	Improvement Type
2040-192	N/A	Williamsburg	Parkway Dr	Wyndham East / West Entrance	Capitol Landing Road (Rts 5 and 31)	Bicycle / Pedestrian Facility
2040-193	N/A	York County	Bike Lanes on Victory Blvd (Rte 171)	Hampton Hwy (Rt 134)	Carys Chapel Rd	Bicycle / Pedestrian Facility
2040-66	N/A	York County	Bike Path	Tabb High School	Hampton Hwy (Rte 134) at Brick Kiln Creek Bridge	Bicycle / Pedestrian Facility
2040-194	N/A	York County	Coventry Blvd Extension	G.W. Mem Hwy (US 17)	Commonwealth Dr	New Alignment
2040-196	N/A	York County	G.W. Mem Hwy (US 17)	Denbigh Blvd (Rte 173)	Fort Eustis Blvd (Rte 105)	Widening
2040-197	N/A	York County	G.W. Mem Hwy (US 17)	Fort Eustis Blvd (Rte 105)	Coleman Bridge	Widening
2040-199	N/A	York County	G.W. Mem Hwy (US 17)	Dare Rd	Denbigh Blvd (Rte 173)	Widening
2040-198	N/A	York County	J. Clyde Morris Blvd / G.W. Hwy (US 17)	Newport News CL	1.27 mi South of Rte 620 (Lakeside Dr / Oriana Rd)	Widening
2040-228	N/A	York County	Multi Use Path Along Yorktown Rd	Cardinal Ln (Rte 670)	Victory Blvd (Rte 171)	Bicycle / Pedestrian Facility
2040-227	N/A	York County	Penniman Rd (Sidewalk / Multi Use Path)	Williamsburg CL	Marquis Center Pkwy (Rte 199)	Bicycle / Pedestrian Facility
2040-202	N/A	York County	Victory Blvd (Rte 171)	G.W. Mem Hwy (US 17)	Hampton Hwy (Rte 134)	Widening

Note: List not in ranked order